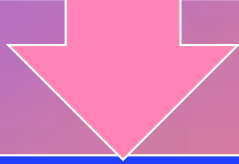
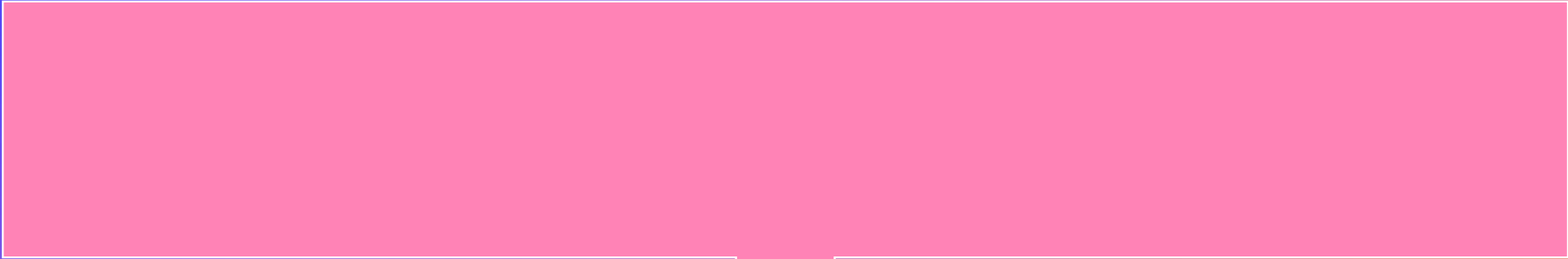


+

•

○

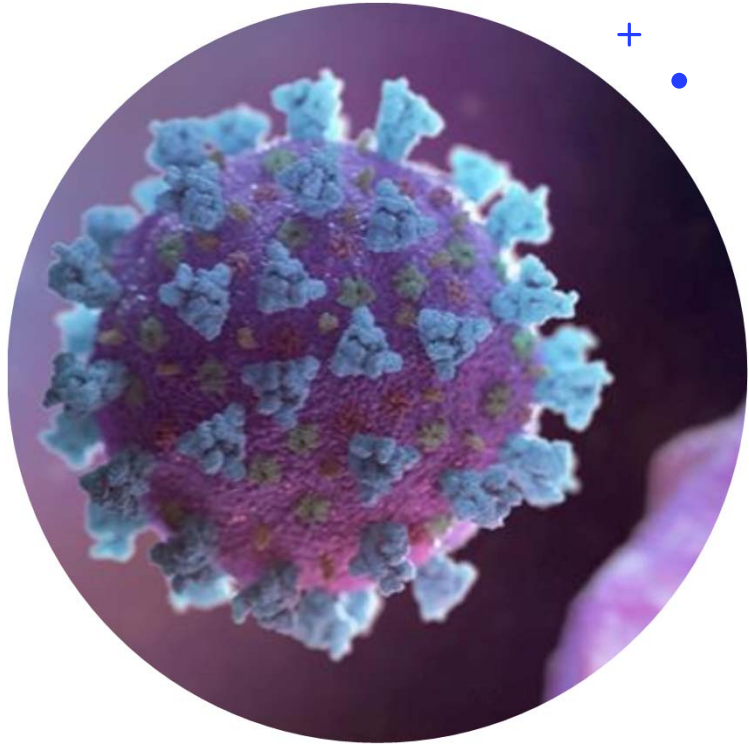


---

---



- 
- 
- 
- 
- 
- 
- 
- 



Hospitalizations were **6** times higher  
and deaths **12** times higher for COVID-19 patients  
with reported underlying conditions\*

**MOST FREQUENTLY REPORTED UNDERLYING CONDITIONS**

CARDIOVASCULAR  
DISEASE



DIABETES



CHRONIC LUNG  
DISEASE



\*compared to those with no reported underlying health conditions

CDC.GOV

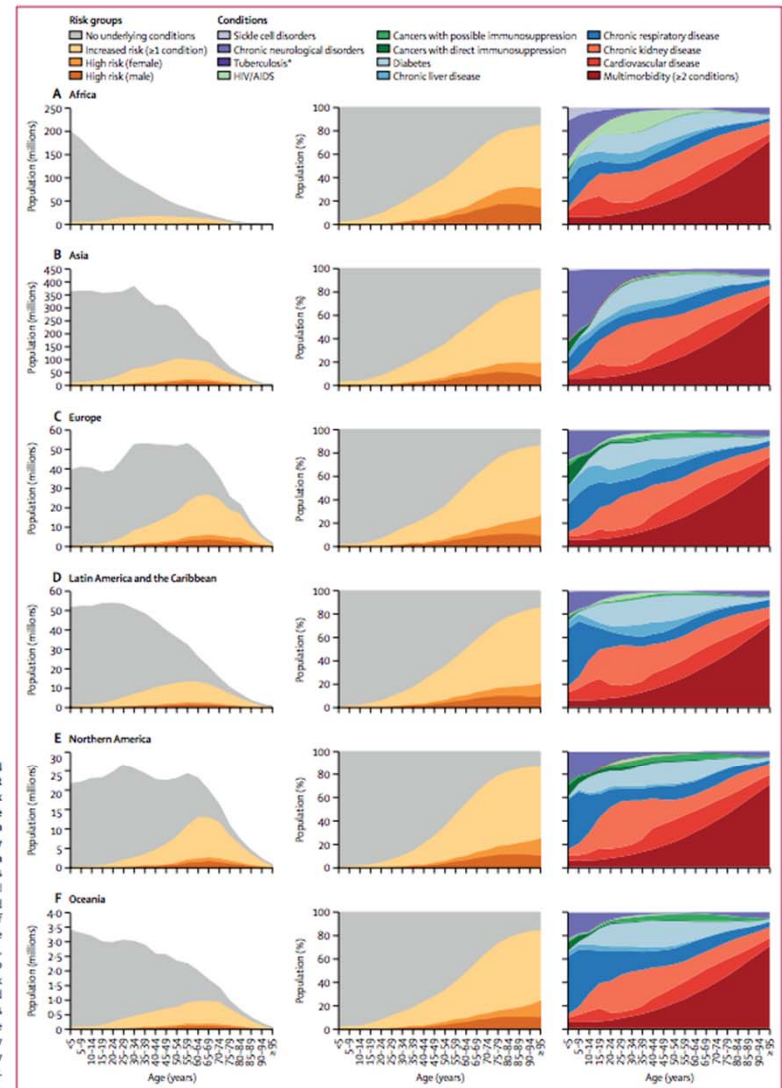
[bit.ly/MMWR61520](https://bit.ly/MMWR61520)

MMWR

# Global, regional, and national estimates of the population at increased risk of severe COVID-19 due to underlying health conditions in 2020: a modelling study

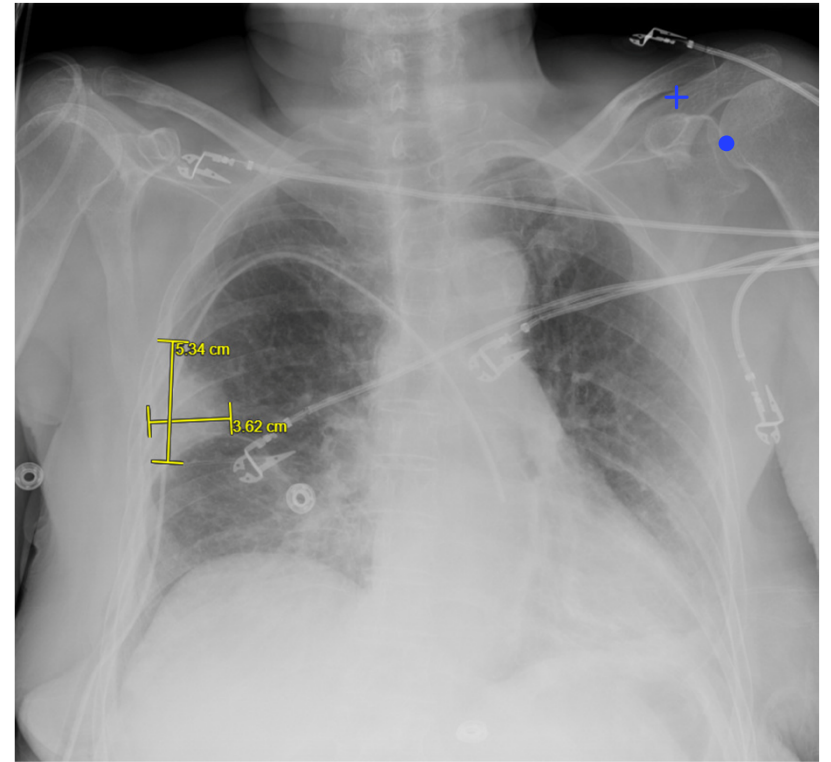
Andrew Clark, Mark Jit, Charlotte Warren-Gash, Bruce Guthrie, Harry HX Wang, Stewart W Mercer, Colin Sanderson, Martin McKee, Christopher Troeger, Kanyin L Ong, Francesco Checchi, Pablo Perel, Sarah Joseph, Hamish P Gibbs, Amitava Banerjee, Rosalind M Eggo, with the Centre for the Mathematical Modelling of Infectious Diseases COVID-19 working group\*

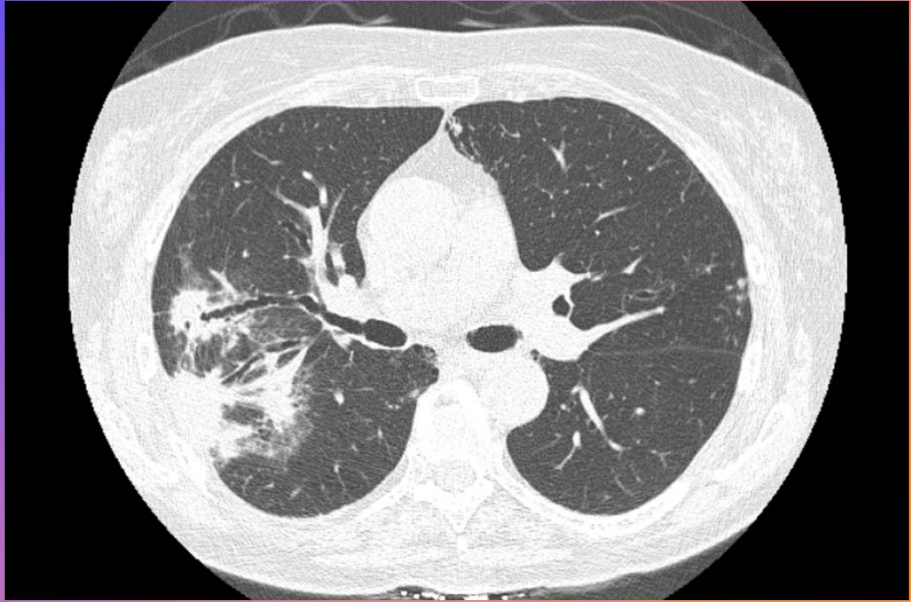
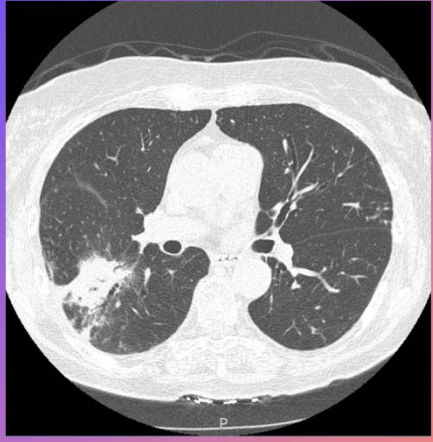
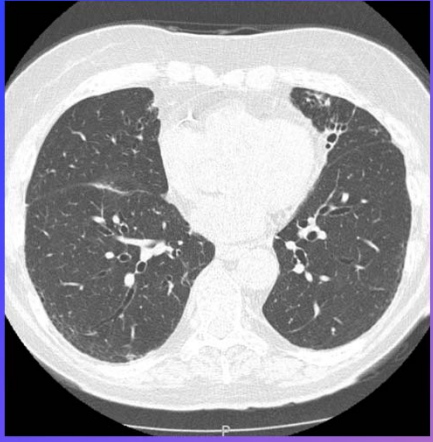
**Figure 2: Number and percentage of population at increased risk and high risk of severe COVID-19 by age and region; and distribution of underlying conditions by age and region**  
 Each row of graphs presents data for a UN geographical region. The first and second columns show the number of individuals and percentage share of the population, respectively, in each risk group by age, with those at high risk divided into females and males. The third column shows the distribution of the 11 underlying conditions by age, including multimorbidity as a separate category. \*Excludes latent infections.



•

•

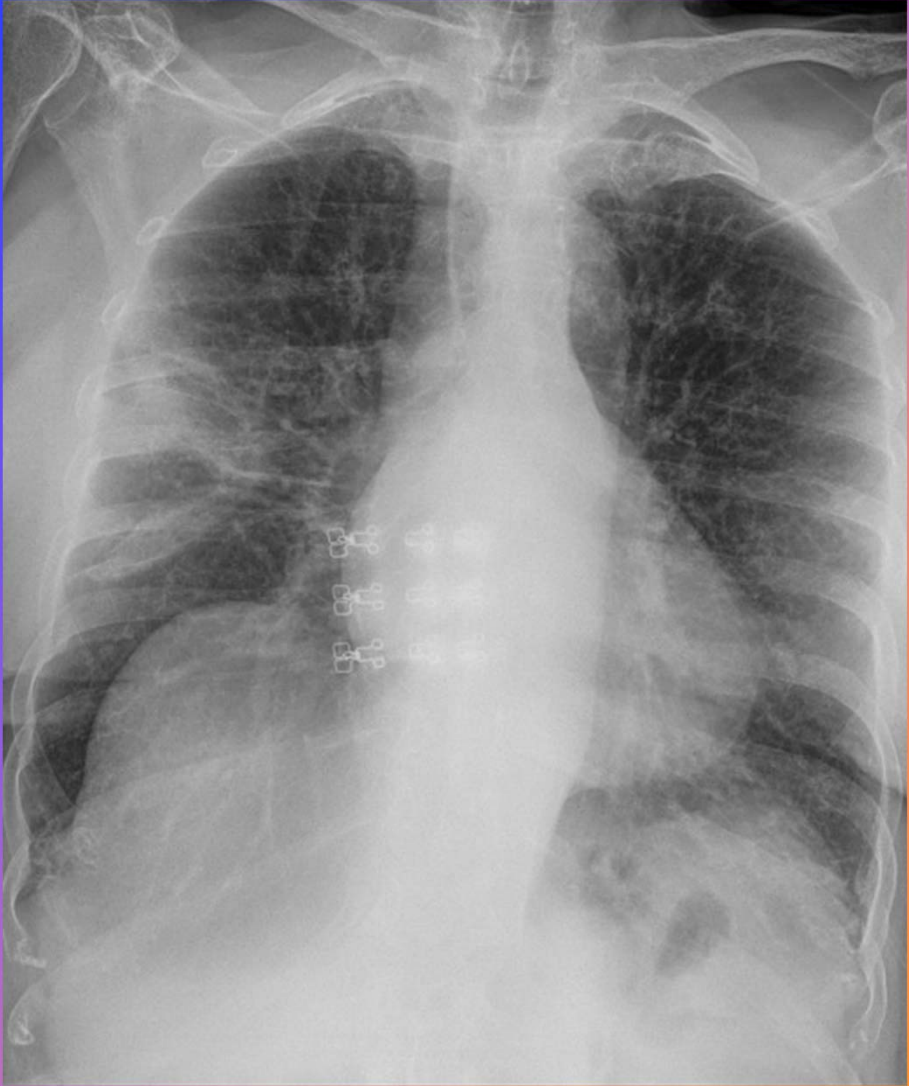




- 

- 

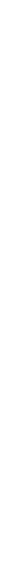




- 

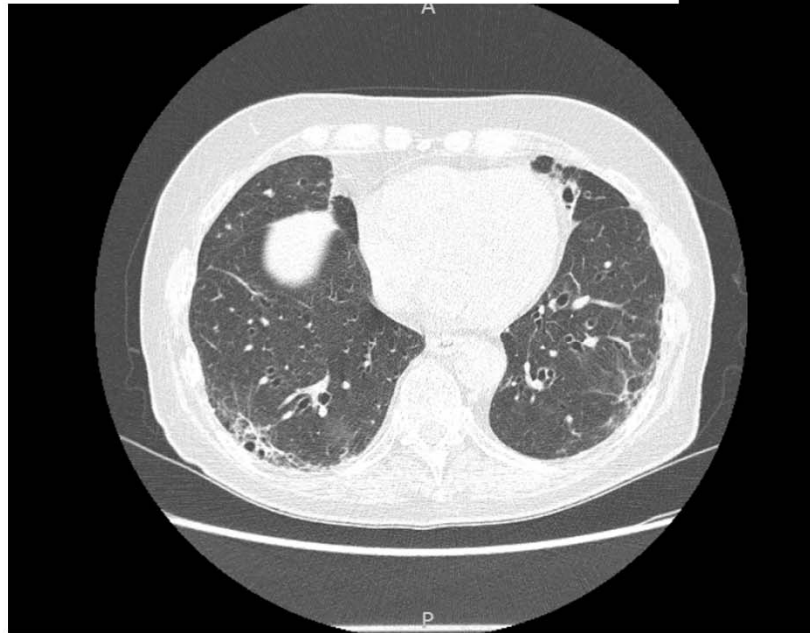
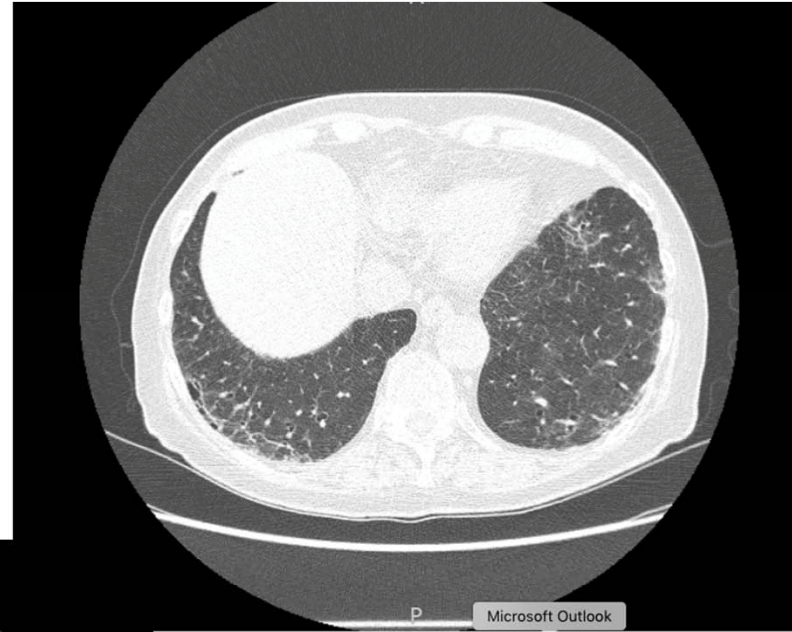
- 

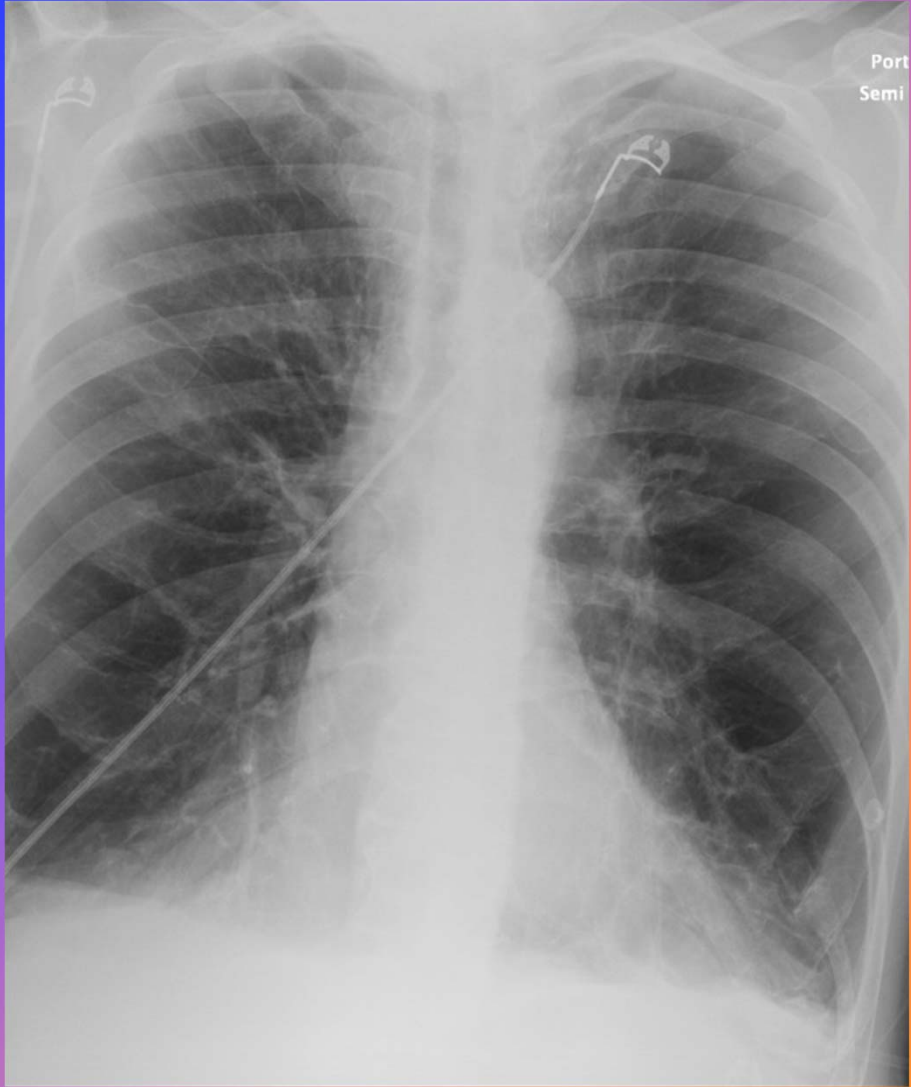
- 





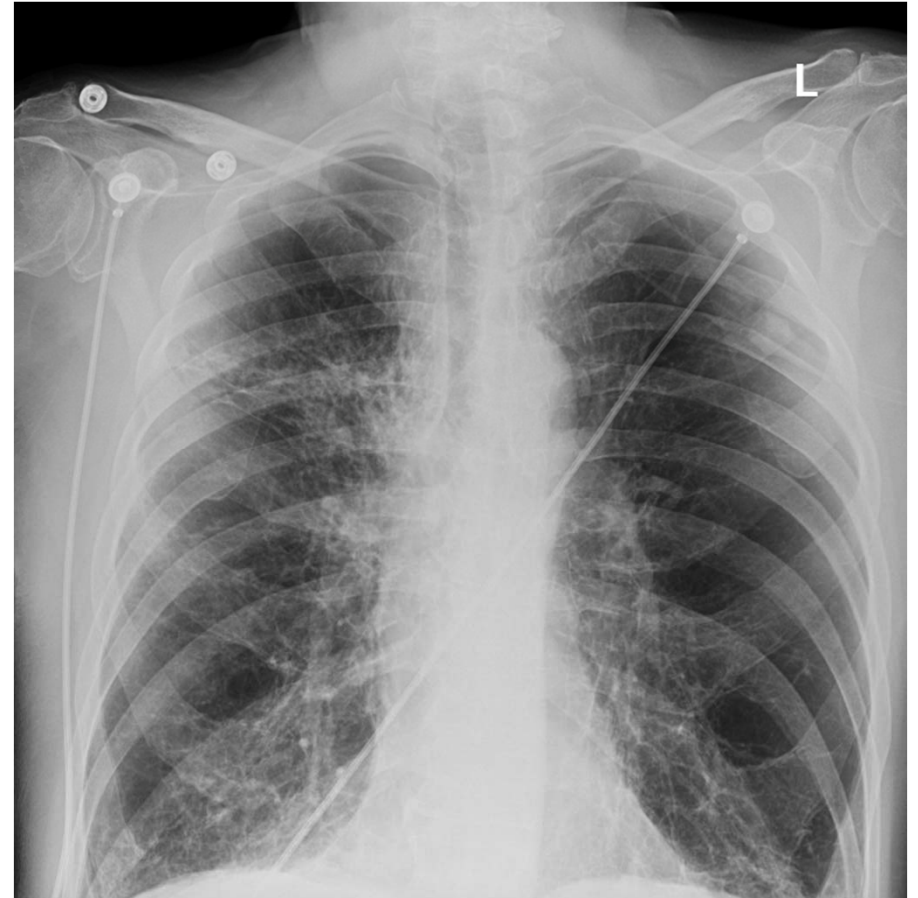
# Case #1: E.B.

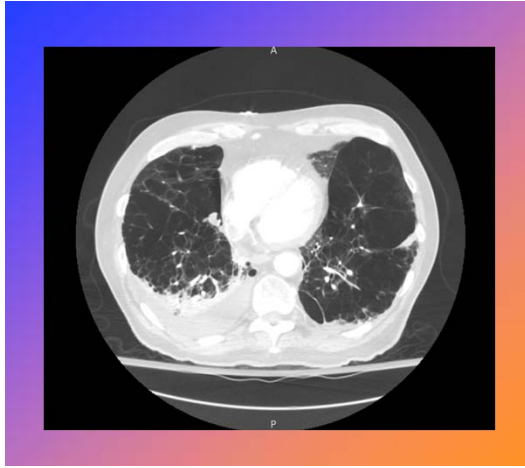
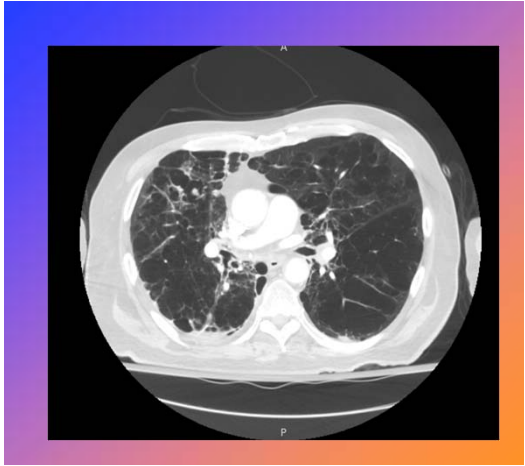
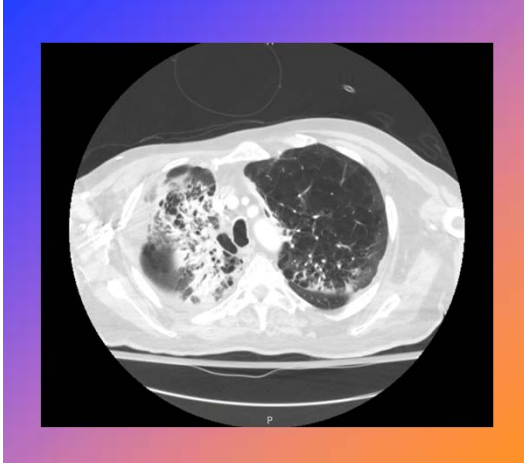




- 
- 
- 







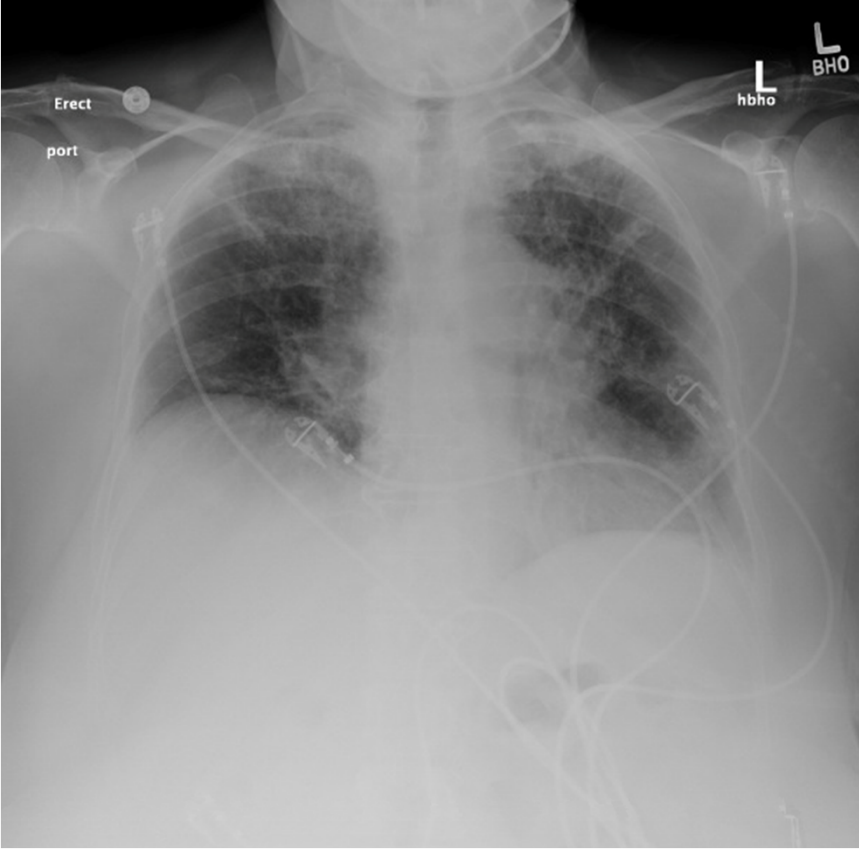
•

•

•

•





•

•

•

Case #3:  
G.H.

