



American Thoracic Society

25 Broadway, 18<sup>th</sup> Floor • New York, NY 10004

The Assembly on  
*Respiratory  
Structure & Function*

Planning Committee, Nominating Committee, and the Early Career Professionals Working Group

- Submit proposals for Scientific Symposium, Sunrise Seminar, Meet the Professor Seminar, and Post-Graduate Courses for the annual International Conference.
- Contact officers directly by visiting the RSF Assembly web page under "Officers and Committees" on the ATS website.

And specifically for Early Career Professionals:

- Volunteer to serve on the Early Career Professionals Working Group, which offers junior investigators the opportunity to establish themselves as contributing members of the Assembly and offer support and guidance to others.
- Participate in the Assembly Mentorship Program, which pairs early career professionals with a senior member to foster career development
- Select one of the RSF reviewing categories when submitting your abstract to the annual International Conference so you can become eligible for an Assembly Scholarships or the Stuart J. Hirst Abstract Excellence Award.

Please direct all inquiries to

[RSF@thoracic.org](mailto:RSF@thoracic.org)

Facebook: <https://www.facebook.com/pages/ATS-RSF-Assembly/508565009274117>

Twitter: [https://twitter.com/ats\\_rsf](https://twitter.com/ats_rsf)

*The Assembly on  
Respiratory Structure  
& Function*



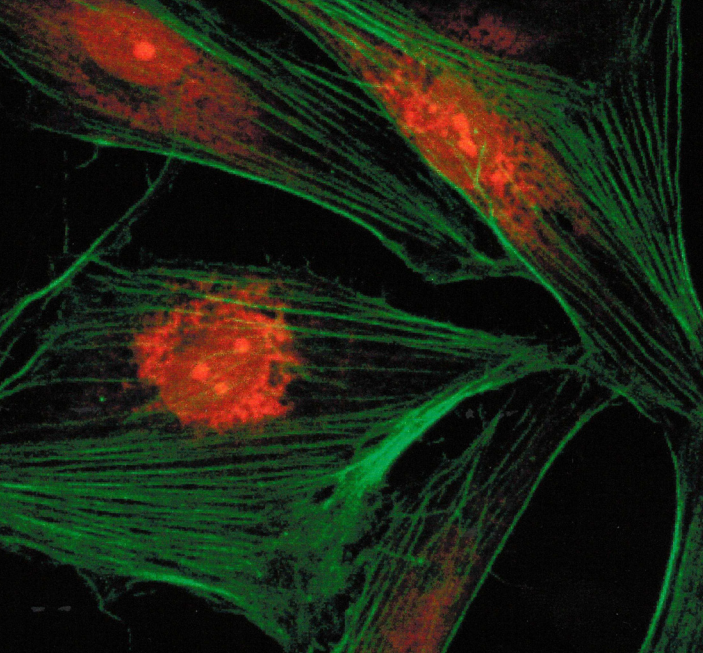
You can use this QR code on your phone to sign up now!

## Get Involved!

You can now register to become more involved in the ATS Assemblies, ATS Committees or both.

There are many ways to grow within ATS and the Assemblies and Committees are a great starting point.

*The Assembly on  
Respiratory Structure  
& Function*



# Welcome

We would like to personally introduce you to the ATS Assembly on Respiratory Structure & Function (RSF).

## Who are we and what are our research interests?

Members of the Assembly on Respiratory Structure & Function are Ph.D. scientists, physician scientists, clinicians, and graduate students. Of all ATS Assemblies, RSF may be the broadest scientifically, with a wide array of interests in the integrated behavior of the respiratory system from the cell and molecular levels to the whole individual, in health and disease.

Areas of interest among RSF members encompass:

- Translational science and medicine
- Precision medicine
- Mechanics of the lung, airways, and their cells
- Airway secretions
- Bronchial circulation

- Lung-heart interactions
- Exercise sciences
- Breathing in special environments
- Respiratory muscle function
- Plasticity of the respiratory system
- Airway smooth muscle function
- Imaging, simulation, and modeling
- Pulmonary gas exchange
- Mechanics of the chest wall
- Control of ventilation
- Innervation of the respiratory system
- Respiratory system anatomy and pathology

## Why you should join the RSF Assembly

Joining an Assembly is the best way to meet and interact with colleagues who share similar interests. The ATS includes more than 16,000 members, and it's easy to feel overwhelmed. By joining the RSF Assembly, you will be part of a group of members whose research focuses are probably the broadest scientifically, but on a smaller and more manageable scale. Assemblies are responsible for planning the program of the annual International Conference, and creating and updating ATS official documents such as research statements, guidelines, and workshop reports.

For early career professionals and trainees (clinical and post-doctoral fellows, residents and graduate students, etc.), there are several activities that the RSF Assembly has to offer:

- Professional and social interactions with leaders in the field of respiratory physiology, biochemistry, anatomy, genetics, and molecular, cellular and system biology, both in health and disease.
- The RSF Mentoring Program, which aligns junior faculty and trainees with more established members of the Assembly for networking opportunities, advice, encouragement about career path, the International Conference, and/or involvement in the activities of the Assembly and the society at large.

- The RSF Membership Meeting at the annual International Conference, where members meet with peers to learn and discuss activities of the Assembly, voice your ideas and discuss projects, interact with the Assembly leadership, and witness the presentation of the RSF Assembly awards to eligible Assembly members, including:
  - The Ann Woolcock Memorial Award is presented to an outstanding young investigator.
  - The Joseph R. Rodarte Memorial Award is presented to a senior scientist for lifetime achievements.
  - The Stuart J Hirst Abstract Excellence Award is presented to a trainee with the top-ranked abstract submitted to the Assembly Program Committee.
  - Robert O. Crapo Lifetime Achievement Award is presented for a lifetime of dedication and accomplishment in the study of pulmonary diagnostic testing.
  - Solbert Permutt Trailblazer Award in Pulmonary Physiology and Medicine is presented to an established investigator who has done pioneering research in the area of respiratory structure and function and has guided and inspired others in the field.
- Opportunities at the International Conference to chair symposia and mini-symposia, facilitate poster discussion and thematic poster sessions, present ideas, and receive awards in a friendly and welcoming environment.

## How to become involved in RSF activities

The absolute best way to learn about the Assembly, link with peers, socialize, be entertained, and network with Assembly members is simple: attend the RSF Membership Meeting at the annual International Conference.

However, there are many other ways to get involved too, for example:

- Serve on one of the RSF assembly standing committees or working groups: Program Committee,